



6th September 2022

The Central Coast Marine Discovery Centre Accessibility Plan

Background

The NSW Disability Inclusion Act 2014 aims to:

- “acknowledge that people with disability have the same human rights as other members of the community and that the State and the community have a responsibility to facilitate the exercise of those rights
- promote the independence and social and economic inclusion of people with disability
- enable people with disability to exercise choice and control in the pursuit of their goals and the planning and delivery of their supports and services
- provide safeguards in relation to the delivery of supports and services for people with disability • support, to the extent reasonably practicable, the purposes and principles of the United Nations Convention on the Rights of Persons with Disabilities
- provide for responsibilities of the State during and following the transition to the National Disability Insurance Scheme.” 38 The Act is supported by the Disability Inclusion Regulation 2014 which provides further detail and clarification on the implementation and detail of the Act. 38 (New South Wales Government, 2014)

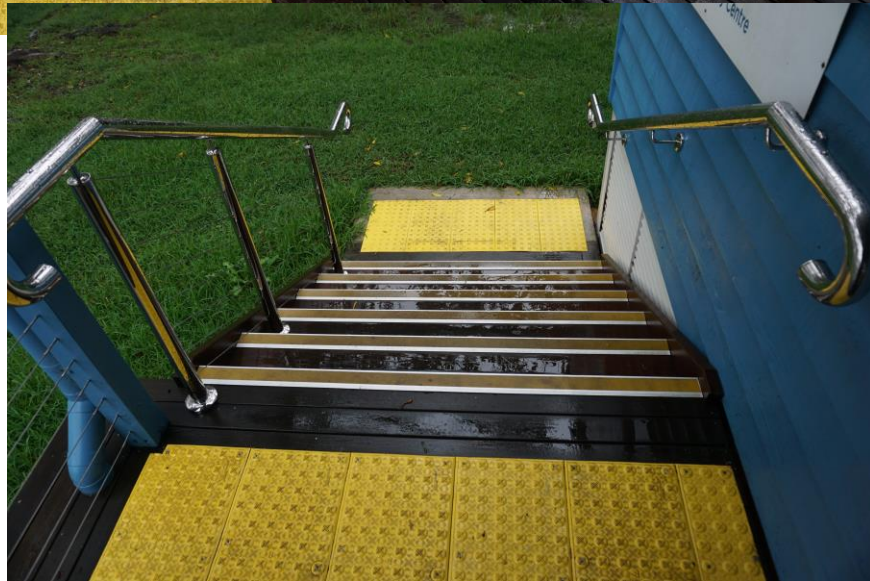
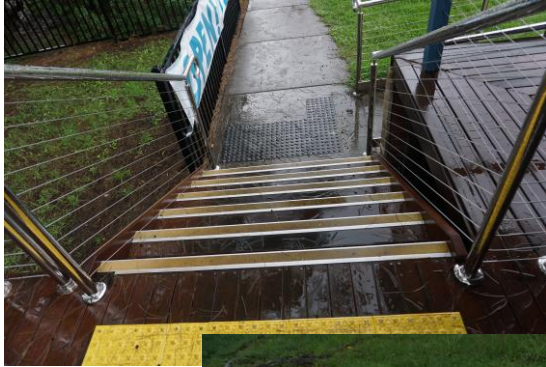
“The NSW Disability Inclusion Plan supports the NSW Government’s commitment to remove systemic and attitudinal barriers so that people with disability have a better opportunity to live a meaningful life and enjoy the full benefits of membership in the community. Achieving an inclusive society is a long term vision that will require consistent efforts from government and the wider community

Policy of the Central Coast Marine Discovery Centre Inc. is to support this vision within the resources and capability available. There are 3 headings covering what the CCMDC does:

1. **Communication:** Information is available on the CCMDC website and in brochures.
2. **Pricing:** Pricing is pitched to advantage Carers (Free entry with Carers Card and Clients are charged the Concession Rate.
3. **Facilities:** Facilities in the building are Accessibility Code Compliant, including: ambulant toilet, access ramps, audio loop, handrails and signage.

John Asquith OAM,
CCMDC Chairman and General Manager,
0414-730-032

- **Access Ramps, stairs, doorways, entrances and hallways**



- **Audio Loop in Education Room**



- **Ambulant and Accessible Toilets (5 Toilets in total)**



- **Emergency Lighting**

